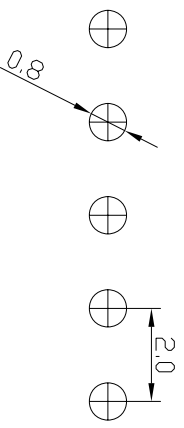
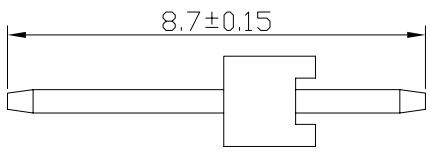
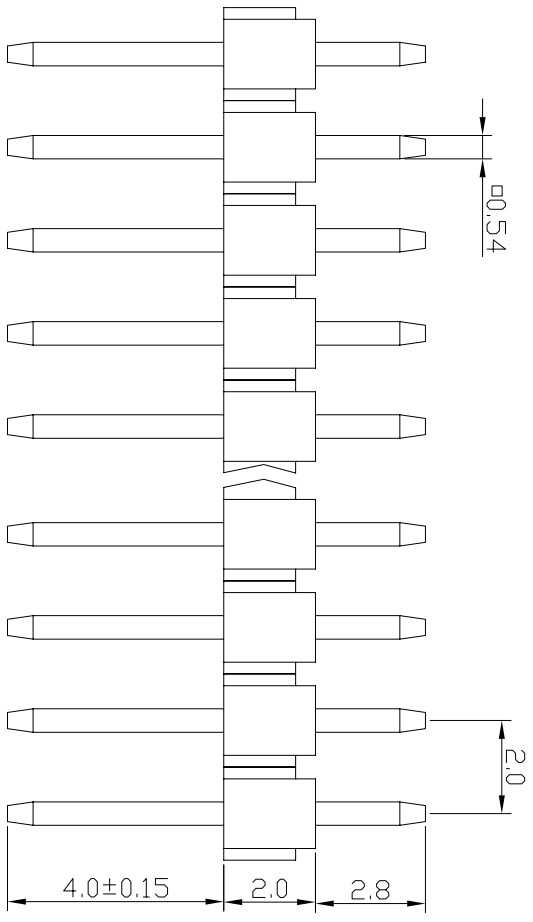
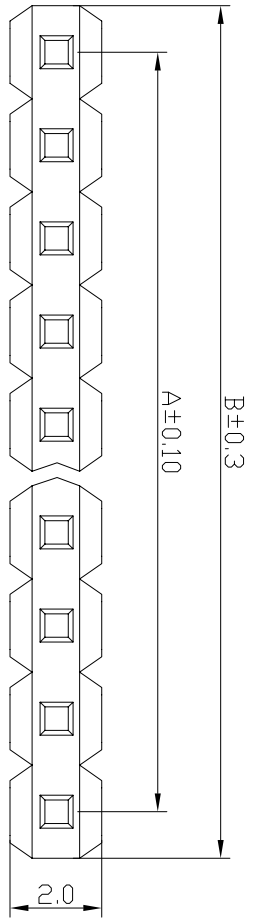


No. of Contacts	DIMENSIONS		
	A	B	C
2	2.0	4.0	
3	4.0	6.0	
4	6.0	8.0	
5	8.0	10.0	
6	10.0	12.0	
7	12.0	14.0	
8	14.0	16.0	
9	16.0	18.0	
10	18.0	20.0	
11	20.0	22.0	
12	22.0	24.0	
13	24.0	26.0	
14	26.0	28.0	
15	28.0	30.0	
16	30.0	32.0	
17	32.0	34.0	
18	34.0	36.0	
19	36.0	38.0	
20	38.0	40.0	
21	40.0	42.0	
22	42.0	44.0	
23	44.0	46.0	
24	46.0	48.0	
25	48.0	50.0	
26	50.0	52.0	
27	52.0	54.0	
28	54.0	56.0	
29	56.0	58.0	
30	58.0	60.0	
31	60.0	62.0	
32	62.0	64.0	
33	64.0	66.0	
34	66.0	68.0	
35	68.0	70.0	
36	70.0	72.0	
37	72.0	74.0	
38	74.0	76.0	
39	76.0	78.0	
40	78.0	80.0	



SPECIFICATIONS

Current Rating: 3Amps
 Insulator body: P.B.T +25 polyester,
 %GF Black or UL94-V0
 Insulator Resistance: 5000MΩ Min
 Dielectric Withstanding: DC 500V
 Contact Resistance: 20mΩ Max
 Durability: 100gf
 Cycles Min
 Contact Material: Copper alloy
 Finish : Tin
 Gold or Duplex plated
 Standard: Gold
 flash all over Nickel
 Operating Temperature: -55°C+105°C
 Recommended P.C.B Hole Layout

检验以此为准！

深圳市威电康精密科技有限公司

UNLESS OTHERWISE SPECIFIED TOLERANCE		ANG ±5°		±0.3	
SCALE		.0		±0.15	
DRAWN		.00		±0.10	
CHECKED		UNIT		mm	
DRAWN NAME		06/15/03		DRAWN NAME	
Pin header 2.0mm*2.0mm				Insulator 2.0mm	
APPROVED		/		/	
PRODUCT NO.		/		/	

PH2.0*2.0 1*NPin DIP

1	2	3	4	5	6	7	8	9	
PH2.0*2.0		1*NPin		DIP		SIZE A4		REV A	
DRAWN NAME		06/15/03		DRAWN NAME		Pin header 2.0mm*2.0mm		Insulator 2.0mm	
APPROVED		/		/		PRODUCT NO.		/	