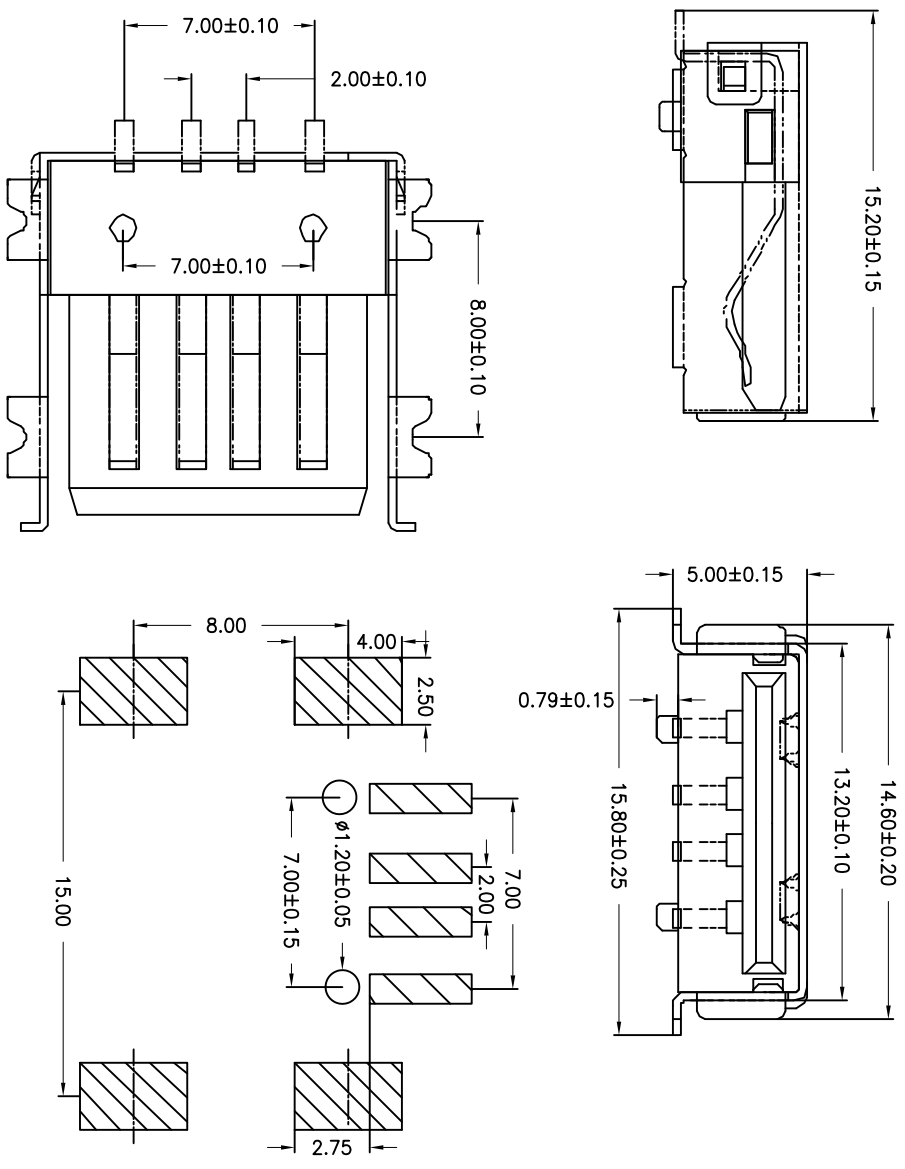


| | | |
|------------|----------------------|------------|
| 目錄 MAPX | 變更內容 MODIFICATION | 日期 DATE |
|------------|----------------------|------------|

NOTES:

- Housing: Thermoplastics, UL94V-0
- Contact: Copper Alloy
- Shell: Copper Alloy/Steel
- Voltage Current Rating: 1.5 AMP. 30V AC
- Insulation Resistance: 1000MΩ Min.
- Contact Resistance: 30 MΩ Max.
- Dielectric Withstanding Voltage: 500W AC
- Temperature Range: -35°C to +85°C
- Insulator color: Black/White
- Plastic material: PBT/LCP/Others
- Shell finish: Nickel plated/Tin-Lead plated
- Mechanical:
 - Mating Force: 3.5KG MAX
 - Umating Force: 0.7 KG MIN.
 - Contact finish:
 - 01: Selective Gold Flash
 - 02: Selective Gold 3U”
 - 03: Selective Gold 5U”
 - 04: Selective Gold 15U”
 - 05: Selective Gold 30U”



产品图
PRODUCT CHART DWG

深圳市精拓金电子有限公司

| | | | | | | | |
|-------------------------------------|-------|-------------|-----|---------------|------------|--------------------------|---------------|
| 公差一览表 TOLERANCE UNLESS OTHERWISE | | 单位 UNITS | MM | 制图 DRAWING | Z-Y-B | 产品料号 PRODUCT PART NO. | JTJ-USB-AF-09 |
| X | ±0.25 | X' | ±5' | 比例 SCALE | 1:1 | 审核 CHECK | 郭治富 |
| XX | ±0.15 | XX' | ±2' | 日期 DATE | 2014/10/20 | 核准 APPD | 叶文国 |
| .XXX | ±0.10 | .XXX' | ±1' | 角法 VIEW | | 版本 VER | A0 |