

MAPX	MODIFICATION	DATE
------	--------------	------

NOTES:

1. HOUSING: SEE NOTES.  
 TERMINAL: SEE NOTES.  
 SHELL: SEE NOTES.

SPECIFICATION:

1. ELECTRICAL CHARACTERISTIC:  
 CONTACT RESISTANCE: 30MΩ MAX  
 DIELECTRIC WITHSTANDING VOLTAGE: 500V AC FOR 1MIN  
 INSULATION RESISTANCE: 1000MΩ MIN

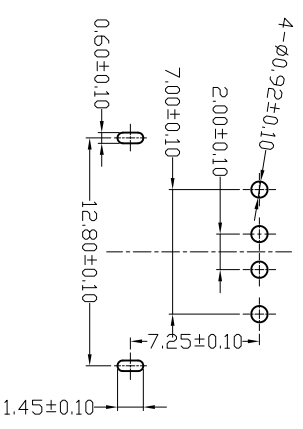
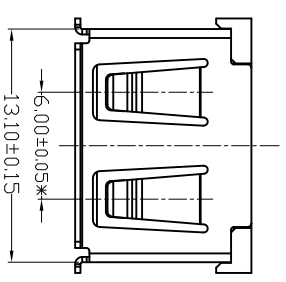
2. MECHANICAL CHARACTERISTIC:  
 INSERTION FORCE: 35N(3.57KG) MAX  
 EXTRACTION FORCE: 10\*35N(1.02\*3.57KG) MIN  
 DURABILITY: 1500 CYCLES EXTRACTION FORCE: 10\*35N  
 3000 CYCLES MIN  
 5000 CYCLES EXTRACTION FORCE: 3\*35N

3. ENVIRONMENTAL:

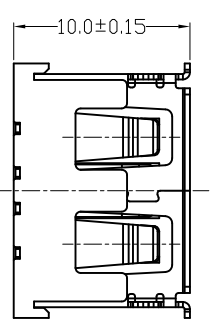
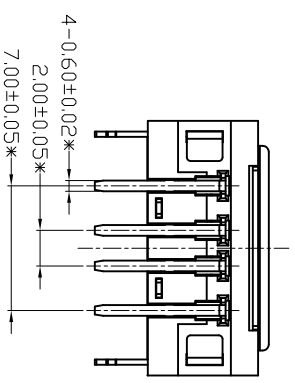
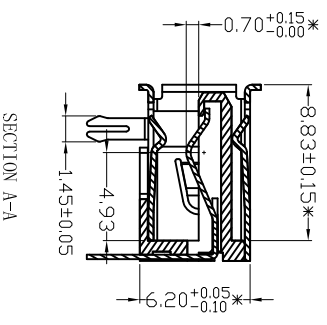
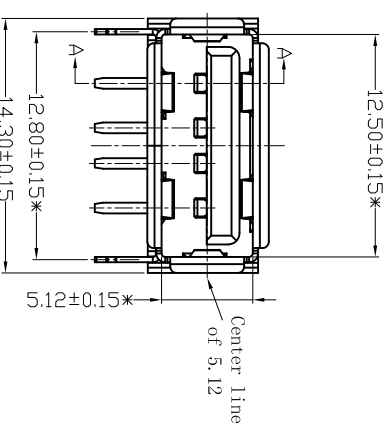
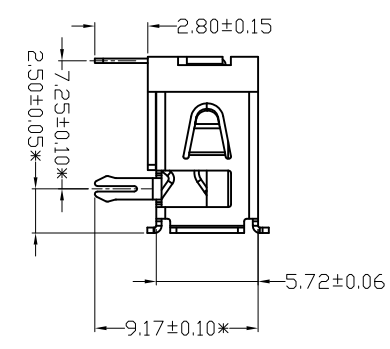
OPERATING TEMPERATURE: -55°C~85°C

4. Contact finish:

- 01: Selective Gold Flash
- 02: Selective Gold 30"
- 03: Selective Gold 50"
- 04: Selective Gold 150"
- 05: Selective Gold 300"



FRONT EDGE OF CONNECTOR  
PCB LAYOUT



产品图  
PRODUCT CHART DWG

深圳市精拓金电子有限公司

公差一览表

TOLERANCE UNLESS OTHERWISE	公差
X: ±0.25	X: ±5°
X: ±0.20	X: ±2°
XX: ±0.15	XX: ±1°
XXX: ±0.10	XXX: ±0.5°

单位 UNITS	MM	制图 DRAWING	Z-Y-B	制料号 PRODUCT PART NO.	
比例 SCALE	1:1	审核 CHKD		产品名称 PRODUCT NO.	USB A/F DIP 90° H6.2(10.0)有卷边
日期 DATE	2012.06.15	核准 APPD		角法 VIEW	版本 VER
				⊙	AD

