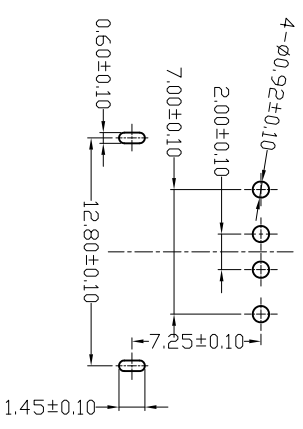
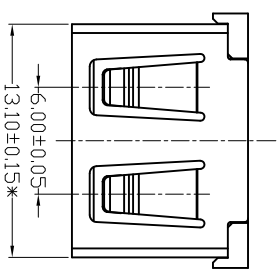


MAPX	MODIFICATION	DATE
------	--------------	------

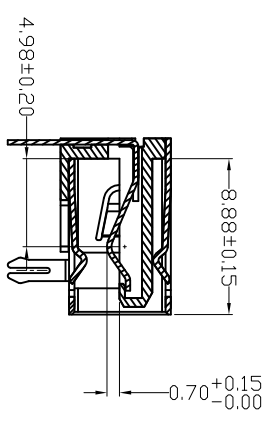
NOTES:  
 1. HOUSING: SEE NOTES.  
 TERMINAL: SEE NOTES.  
 SHELL: SEE NOTES.

SPECIFICATION:

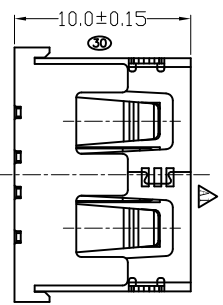
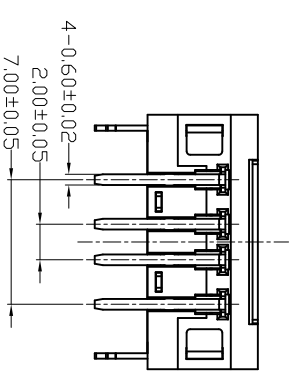
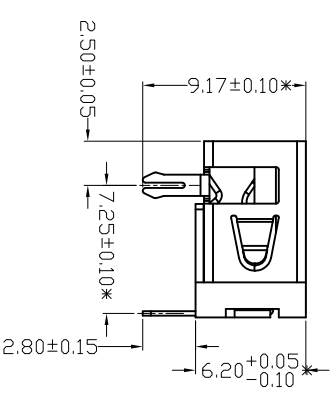
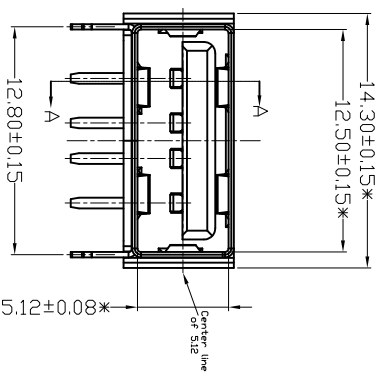
- ELECTRICAL CHARACTERISTIC:  
 CONTACT RESISTANCE: 30MΩ MAX  
 DIELECTRIC WITHSTANDING VOLTAGE: 500V AC FOR 1MIN  
 INSULATION RESISTANCE: 1000MΩ MIN
- MECHANICAL CHARACTERISTIC:  
 INSERTION FORCE: 35N(3.57KG) MAX  
 EXTRACTION FORCE: 10\*35N(1.02\*3.57KG) MIN  
 DURABILITY: 1500 CYCLES EXTRACTION FORCE: 10\*35N  
 3000 CYCLES MIN  
 5000 CYCLES EXTRACTION FORCE: 3\*35N
- ENVIRONMENTAL:  
 OPERATING TEMPERATURE: -55°C~+85°C
- Contact finish:  
 01: Selective Gold Flash  
 02: Selective Gold 30"  
 03: Selective Gold 50"  
 04: Selective Gold 150"  
 05: Selective Gold 300"



FRONT EDGE OF CONNECTOR  
PCB LAYOUT



SECTION A-A



产品图  
PRODUCT CHART DWG

深圳市精拓金电子有限公司

公差一览表		单位	MM	制图	Z-Y-B	制图料号	
TOLERANCE UNLESS OTHERWISE		UNITS		DRAWING		PRODUCT PART NO.	
X	±0.25	X	±5°	审核		产品名称	USB A/F DIP 90° (10.0)无卷边
X	±0.20	X	±2°	CHKD	1:1	PRODUCT NO.	
XX	±0.15	XX	±1°	核准		角法	
XXX	±0.10	XXX	±0.5°	APPD	2012.06.15	VIEW	
						版本	AD
						VER	

