

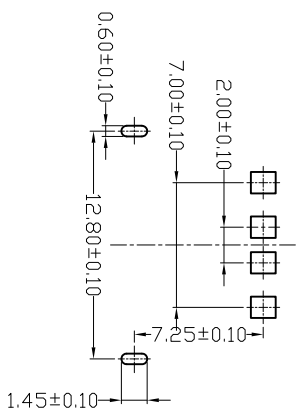
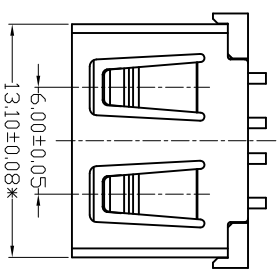
MAPX	MODIFICATION	DATE
------	--------------	------

NOTES:

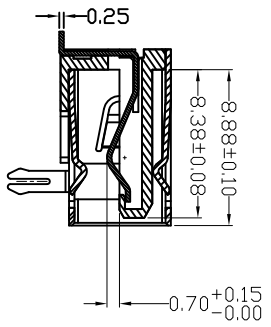
1. HOUSING: SEE NOTES.
TERMINAL: SEE NOTES.
SHELL: SEE NOTES.

SPECIFICATION:

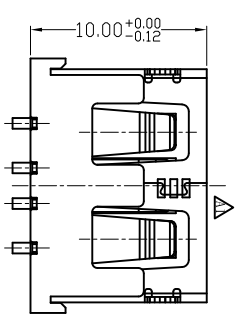
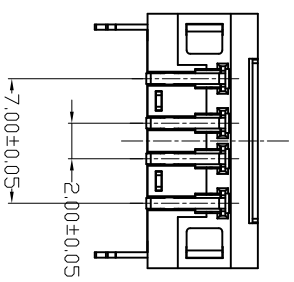
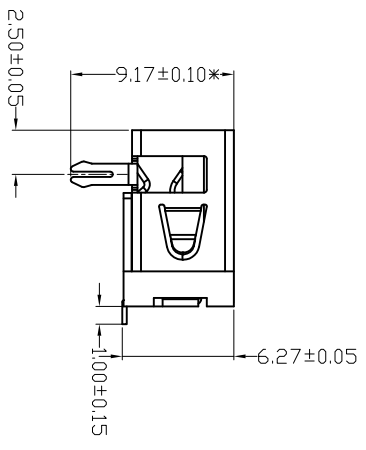
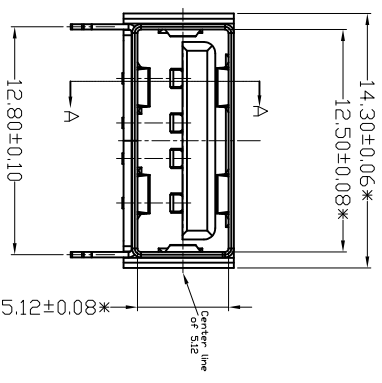
- ELECTRICAL CHARACTERISTIC:
CONTACT RESISTANCE: 30MΩ MAX
DIELECTRIC WITHSTANDING VOLTAGE: 500V AC FOR 1MIN
INSULATION RESISTANCE: 1000MΩ MIN
- MECHANICAL CHARACTERISTIC:
INSERTION FORCE: 35N(3.57KG) MAX
EXTRACTION FORCE: 10~35N(1.02~3.57KG) MIN
DURABILITY: 1500 CYCLES EXTRACTION FORCE: 10~35N
3000 CYCLES MIN
5000 CYCLES EXTRACTION FORCE: 3~35N
- ENVIRONMENTAL:
OPERATING TEMPERATURE: -55°C~+85°C
- Contact finish:
01: Selective Gold Flash
02: Selective Gold 30"
03: Selective Gold 50"
04: Selective Gold 150"
05: Selective Gold 300"



FRONT EDGE OF CONNECTOR
PCB LAYOUT



SECTION A-A



PRODUCT CHART DWG

产品图
公差一览表

TOLERANCE UNLESS OTHERWISE	公差
X	±0.25
X	±0.20
XX	±0.15
XXX	±0.10

UNIT	单位
X	±5°
X	±2°
XX	±1°
XXX	±0.5°

DATE	2012.06.15	DATE	2012.06.15
SCALE	1:1	SCALE	1:1
PRODUCT NO	USB A/F SMT (10.0) 无卷边	PRODUCT NO	USB A/F SMT (10.0) 无卷边
VIEW	角法	VIEW	角法
VER	版本	VER	版本
APPD	核准	APPD	核准
DRAWING	制图	DRAWING	制图
CHKD	审核	CHKD	审核
UNIT	MM	UNIT	MM
Z-Y-B		Z-Y-B	
PRODUCT PART NO		PRODUCT PART NO	

1 2 3 4 5 6 7 8 9 10

A B C D E F G

深圳市精拓金电子有限公司