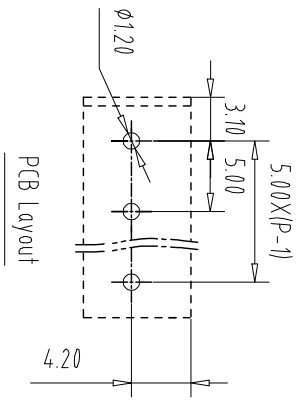
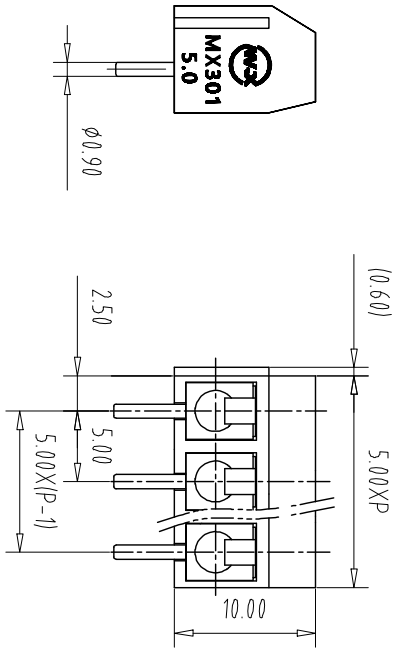
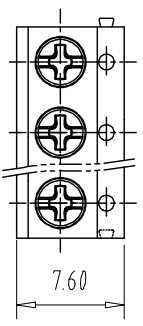


注：本板为禁止运输、复制、编辑文件，以及用其内容进行交流



REV	ECN NO.	CONTENT	CHK	DATE

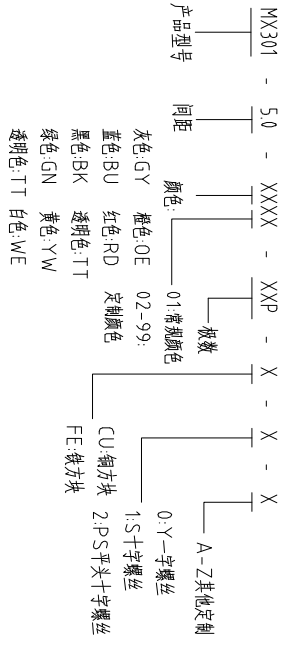
NOTES1:
 UL Standard
 1.Rating voltage/current: 300V//16A
 2.withstanding voltage: AC2000V//1Min
 3.Torque value: M2.5, 3.54LbIn
 4.Wire range: 24~14AWG
 IEC Standard

Pollution Degree	3	2	2
Overvoltage Category	III	III	II
Rate Impulse Voltage(KV)	/	/	/
Rate Voltage(V)	/	250V	/
Rate Current(A)	/	17.5A	/

NOTES2:
 1.Housing: PA66(UL94V-0)
 2.Solder Pin: Brass(Sn Plated)
 3.Spring: Stainless Steel
 4.Screw: Steel(M2.5,Zn Plated)

NOTES3:
 1.Pitch: 5.0mm Poles: 02-22P
 2.Stripping length: 6-7mm
 3.Operating temperature: -40℃~+105℃
 4.RoHS Compliance

How to order
 MX301 - 50 - XXXX - XXP - X - X - X



Pitch Range In mm	Nominal Dimension In mm	Range	Symbol
Over 6	Over 10	Over 30	0.1/10
TO 6	TO 10	TO 30	
Over 10	Over 24	Over 60	±
TO 10	TO 24	TO 60	
Over 24	Over 60	Over 100	±2°
TO 24	TO 60	TO 100	
Over 60	Over 150	Over 300	±1.30
TO 60	TO 150	TO 300	
Over 150	Over 300	Over 600	±1.00
TO 150	TO 300	TO 600	
Over 300	Over 600	Over 1000	±1.00
TO 300	TO 600	TO 1000	
Over 600	Over 1500	Over 3000	±1.30
TO 600	TO 1500	TO 3000	

ITEM	NAME OF PART	NO. OF PART	Q'TY	MATERIAL	NOTE
DWG	CHK	DATE	UNITS	MM	SHEET/OF 1/1
APP	DATE	SCALE	SCALE	A4	1/1
NAME					MX301-5.0-XXP
DWGNO.					

MAXU CIXI MAXU ELECTRONICS CO.,LTD
 慈溪迈旭电子有限公司