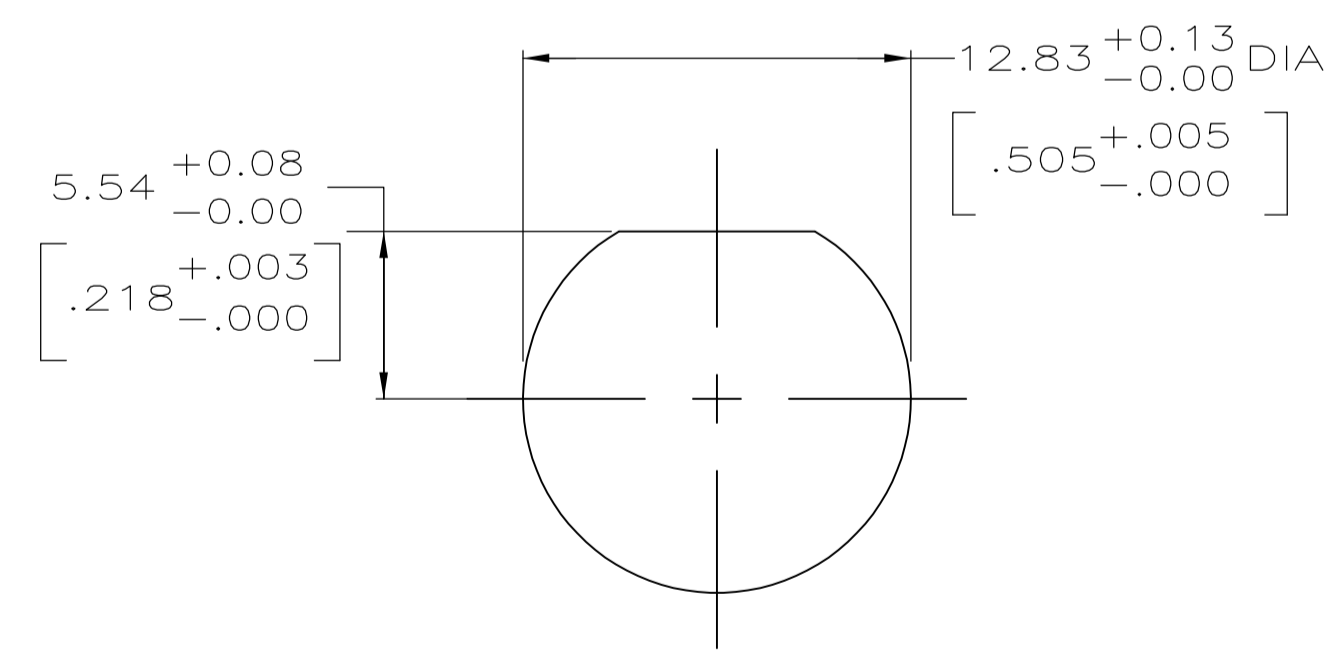
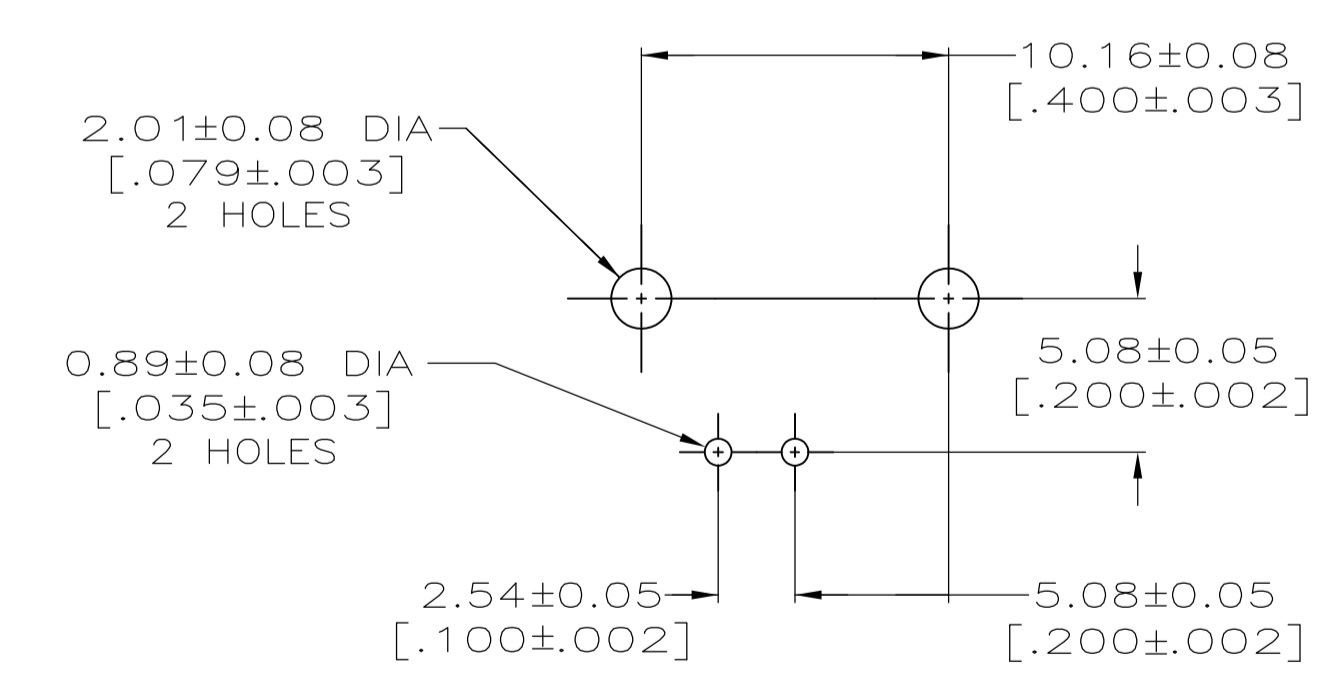


- 1 ZINC PER QQ-Z-363.
- 2 POLYMETHYLPENTENE PER ASTM-D-1238.
- 3 PHOSPHOR BRONZE PER QQ-B-750.
- 4 BRASS PER ASTM-B-453.
- 5 BRASS PER ASTM-B-16.
- 6 NICKEL PLATE PER QQ-N-290, 3.81 μm [.000150] MINIMUM THICK.
- 7 TIN PLATE PER ASTM-B-545, 3.81 μm [.000150] MINIMUM THICK.
- 8 GOLD PLATE PER MIL-G-45204, 1.27 μm [.000050] MINIMUM THICK.
- 9 GOLD PLATE PER MIL-G-45204, 0.76 μm [.000030] MINIMUM THICK.
- 10. SEE INSTRUCTION SHEET 408-2769.



RECOMMENDED PANEL CUTOUT



PCB CONFIGURATION

5413879-2	
5413879-1	
CONTACT FINISH	PART NUMBER

THIS DRAWING IS A CONTROLLED DOCUMENT.		DIN	A. FERNANDEZ-DOCK5	22APR2005
DIMENSIONS: mm [INCHES]		CJK	J. HAVENER	22APR2005
TOLERANCES UNLESS OTHERWISE SPECIFIED:		APVD	J. LIPPERT	22APR2005
0. PLC	± -	NAME	JACK, RIGHT ANGLE, PCB	
1. PLC	± -	PRODUCT SPEC	108-12078	
2. PLC	± 0.20 [.008]	APPLICATION SPEC	50 OHM, SERIES BNC	
3. PLC	± -	SIZE	A1	00779
4. PLC	± -	WEIGHT	5413879	
ANGLES	± -	CUSTOMER DRAWING	SCALE	4:1
MATERIAL SEE NOTES 1-5	FINISH SEE NOTES 6-9	RESTRICTED TO	SHEET	1 OF 1
		REV	A1	

Mouser Electronics

Authorized Distributor

Click to View Pricing, Inventory, Delivery & Lifecycle Information:

[TE Connectivity:](#)

[5413879-2](#)