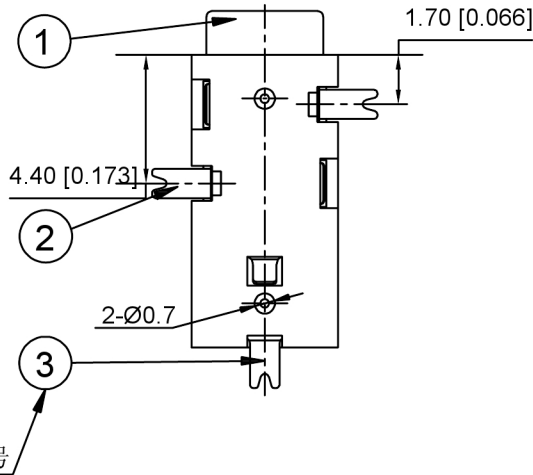
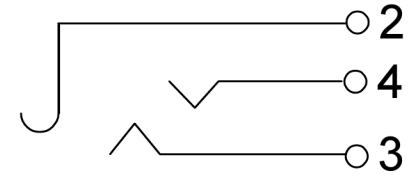
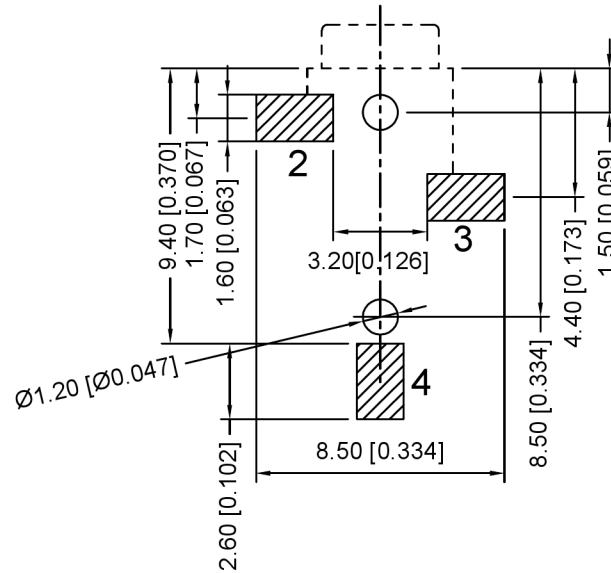


电路原理图

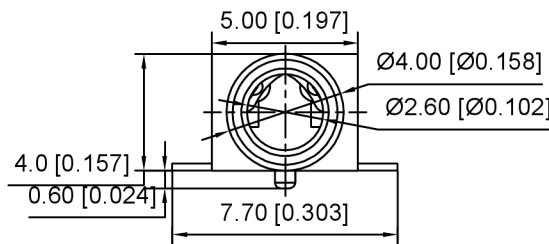


PCB板位置尺寸 TOP VIEW



Technical characteristics
技术特征
Service condition: -30 ~70°
使用条件: -30 ~70°
Rated load: DC30V 0.5A
额定负载: DC30V 0.5A
Contact resistance: ≤0.03 Ω
接触电阻: ≤0.03 Ω
Insulation resistance: ≥100MΩ DC250V
绝缘电阻: ≥100MΩ DC250V
Pressure: AC500V(50HZ)/min
压力: AC 500v(50HZ)/分钟
Insertion and pulling force: 3~20N
插拔力: 3~20N
Life expectancy: 5000
寿命: 5000

	MATERIAL	PLATING
terminal 1	Phosphor Bronze	tin
terminal 2	Phosphor Bronze	tin
terminal 3	Phosphor Bronze	tin
plastic	PPA	



零件序号

广东星坤科技股份有限公司

Δx	日期
Δx	日期
Δx	日期
MARK	DESCRIPTION

文件工程章

REVISIONS	DATE	REVISED	APPROVED	UNSPECIFIED TOLERANCES

ANGLAR	±5°	XKIB
L ≤ 4	±0.2	
4 < L ≤ 16	±0.3	
16 < L ≤ 63	±0.4	
L > 63	±0.5	
XKB INDUSTRIAL PRECISION CO., LIMITED		

DSND	SCALE: N/A	MODEL TYPE: 3.5 PHONE JACK
DWN	VIEW:	PART NO.: PJ-326-SMT
CHKD	UNIT: mm/in	DWG NO.: X-PJ-326-SMT
APPD	SIZE: A4	WEIGHT
		SHEET
		REVISIC
		1/1
		A0