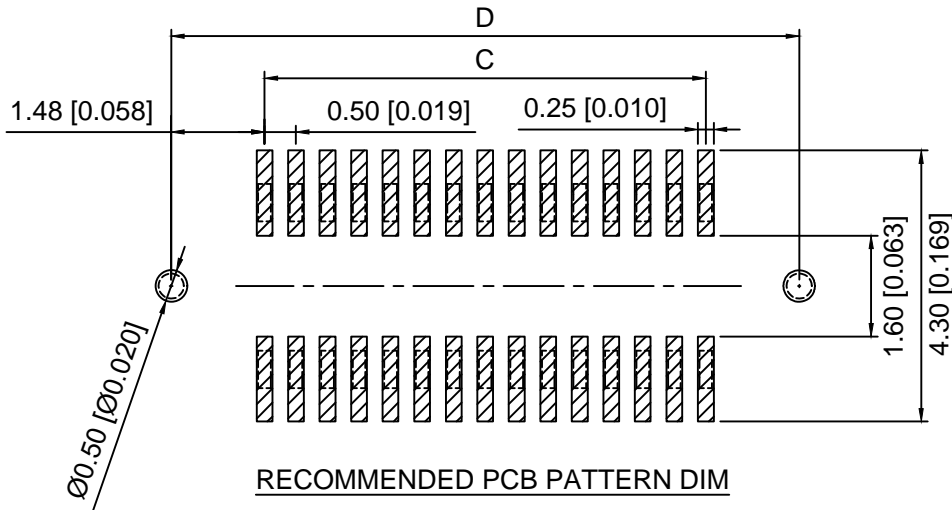
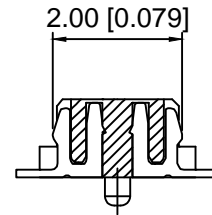
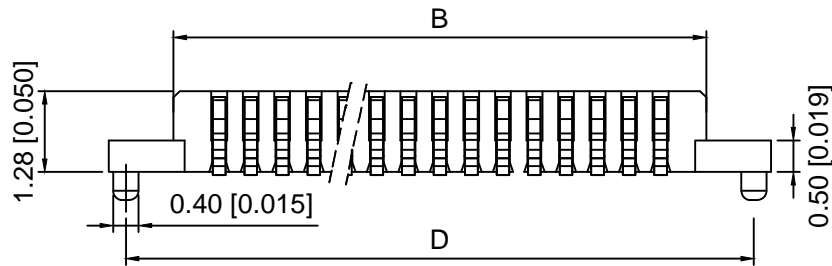


3D VIEW



RECOMMENDED PCB PATTERN DIM

Specifications:
 规格:
 Voltage rating:50V AC/DC
 额定电压: 50V AC/DC
 Current rating:0.5A AC/DC
 额定电流: 0.5A AC/DC
 Withstanding voltage:200V AC/minute
 耐受电压: 200V AC/分钟
 Temperature range:-25°C-+85°C
 温度范围: -25°C-+85°C
 Insulation resistance: 500MΩ min
 绝缘电阻: 500MΩ Min
 Contact resistance:40mΩ Max
 接触电阻: 40mΩ Max

X0511 W V S-XX X X-LP V01
 ① ② ③ ④ ⑤ ⑥ ⑦ ⑧ ⑨

- 1.Series No
- 2.Category:W-Wafer
- 3.Welding Board Angle:V-Straight 180°
- 4.Welading Way:S-SMT
- 5.Row No.Pin No:XX-10-80P
6. Height:A=1.28mm
- 7.Special No:Blank-Without positioning Column
S-With positioning Column
- 8.Material:LP-LCP UL 94V-0
- 9.Plating:V01-Gold Flash

Poles	A	B	C	D	Poles	A	B	C	D
10	5.50	3.40	2.00	4.96	46	14.50	12.40	11.00	13.96
12	6.00	3.90	2.50	5.46	48	15.00	12.90	11.50	14.46
14	6.50	4.40	3.00	5.96	50	15.50	13.40	12.00	14.96
16	7.00	4.90	3.50	6.46	52	16.00	13.90	12.50	15.46
18	7.50	5.40	4.00	6.96	54	16.50	14.40	13.00	15.96
20	8.00	5.90	4.50	7.46	56	17.00	14.90	13.50	16.46
22	8.50	6.40	5.00	7.96	58	17.50	15.40	14.00	16.96
24	9.00	6.90	5.50	8.46	60	18.00	15.90	14.50	17.46
26	9.50	7.40	6.00	8.96	62	18.50	16.40	15.00	17.96
28	10.00	7.90	6.50	9.46	64	19.00	16.90	15.50	18.46
30	10.50	8.40	7.00	9.96	66	19.50	17.40	16.00	18.96
32	11.00	8.90	7.50	10.46	68	20.00	17.90	16.50	19.46
34	11.50	9.40	8.00	10.96	70	20.50	18.40	17.00	19.96
36	12.00	9.90	8.50	11.46	72	21.00	18.90	17.50	20.46
38	12.50	10.40	9.00	11.96	74	21.50	19.40	18.00	20.96
40	13.00	10.90	9.50	12.46	76	22.00	19.90	18.50	21.46
42	13.50	11.40	10.00	12.96	78	22.50	20.40	19.00	21.96
44	14.00	11.90	10.50	13.46	80	23.00	20.90	19.50	22.46

X0511WVS-XXXX-LPV01	LCP	Phosphor Bronze	X0511F
PART NO	Material	Material(Pin)	Suitable XKB Female

DSND	SCALE: N/A	MODEL TYPE:
DWN	VIEW:	0.5mm BTB Style Connector
CHKD	UNIT: mm/in	PART NO.:
APPD	SIZE: A4	X0511WVS-XXXX-LPV01
		DWG NO.:
		X-X0511WVS-XXXX-LPV01
		WEIGHT
		SHEET
		REVISION
		1/1
		A0



XKB INDUSTRIAL PRECISION CO.,LIMITED

ANGLAR	±5°
L ≤ 4	±0.2
4 < L ≤ 16	±0.3
16 < L ≤ 63	±0.4
L > 63	±0.5
UNSPECIFIED TOLERANCES	

ΔX					
ΔX					
ΔX					
MARK	DESCRIPTION	DATE	REVISED	APPROVED	
REVISIONS					