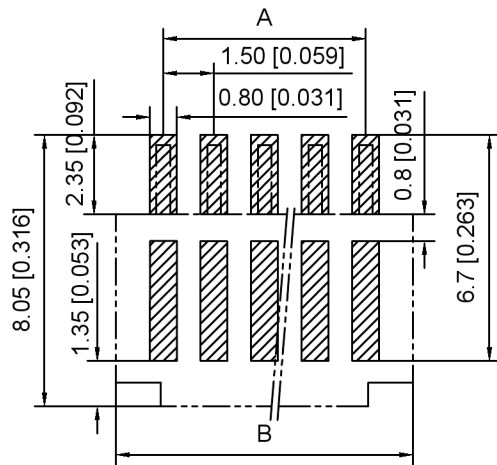


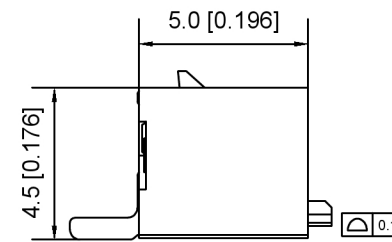
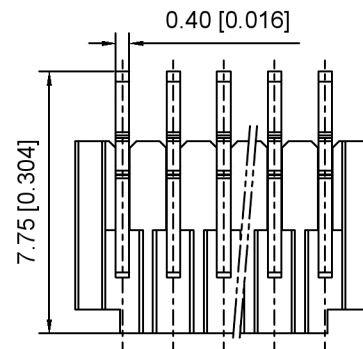
Specifications:
 规格:
 Voltage rating:350V AC/DC
 额定电压: 350V AC/DC
 Current rating:3A AC/DC
 额定电流: 3A AC/DC
 Withstanding voltage:500V AC/minute
 耐受电压: 500V AC/分钟
 Temperature range:-25°C-+85°C
 温度范围: -25°C-+85°C
 Insulation resistance: 1000MΩ min
 绝缘电阻: 1000MΩ Min
 Contact resistance:20mΩ Max
 接触电阻: 20mΩ Max

X1511 W R S-XX L HF -LP SW
 ① ② ③ ④ ⑤ ⑥ ⑦ ⑧ ⑨

- 1.Series No
- 2.Category:W-Wafer
- 3.Welding Board Angle:R-Straight 90°
- 4.Welding Way : S-SMT
- 5.Row No.Pin No:XX-02P-15P
- 6.Special No:L-With lock
- 7.Special No:HF-Halogen Free
- 8.Material:LP-LCP UL94V-0
- 9.Plating; SW-Matte SN Plating



Recommended PCB Layout



Poles	DIM A	DIM B	DIM C
02	1.50	4.30	3.70
03	3.00	5.80	5.20
04	4.50	7.30	6.70
05	6.00	8.80	8.20
06	7.50	10.30	9.70
07	9.00	11.80	11.20
08	10.50	13.30	12.70
09	12.00	14.80	14.20
10	13.50	16.30	15.70
11	15.00	17.80	17.20
12	16.50	19.30	18.70
13	18.00	20.80	20.20
14	19.50	22.30	21.70
15	21.00	23.80	23.20

X1511WRS-XXLHF-LPSW	LCP	Phosphor Bronze	Tin	X1511H-L
PART NO	Material	Material(Pin)	Plating	Suitable XKB Housing

DSND	SCALE: N/A	MODEL TYPE: 1.5mm Crimp Style Connector
DWN	VIEW:	PART NO.: X1511WRS-XXLHF-LPSW
CHKD	UNIT: mm/in	DWG NO.: X-X1511WRS-XXLHF-LPSW
APPD	SIZE: A4	

WEIGHT	SHEET	REVISION
	1/1	A0

ANGLAR	±5°
L ≤ 4	±0.2
4 < L ≤ 16	±0.3
16 < L ≤ 63	±0.4
L > 63	±0.5



XKIB INDUSTRIAL PRECISION CO., LIMITED

广东星坤科技股份有限公司

DATE	日期
MARK	DESCRIPTION

文件工程章

REVISIONS	UNSPECIFIED TOLERANCES
DATE	REVISD
APPROVED	

www.helloxkb.com www.helloxkb.cn www.xk-dg.cn