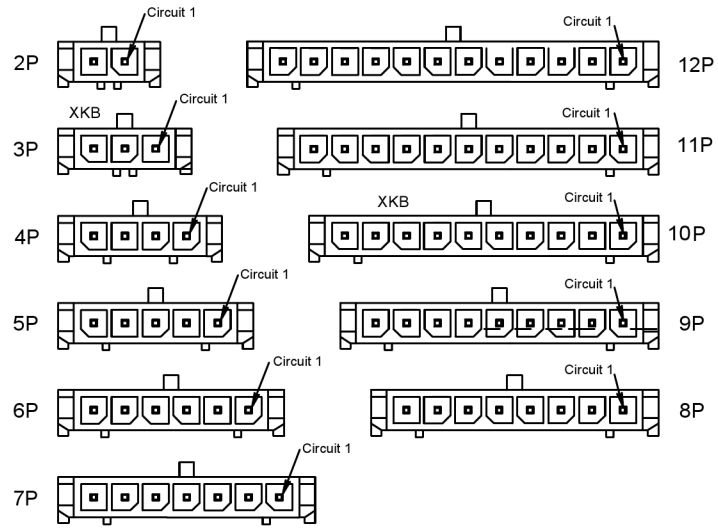
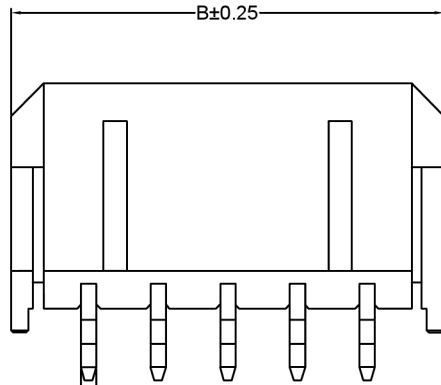
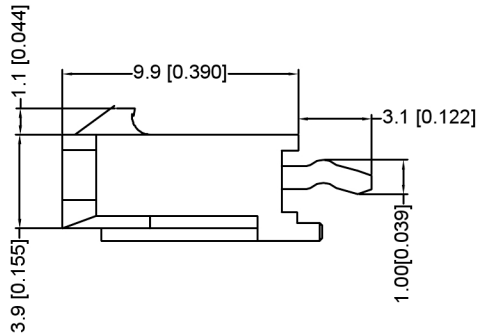
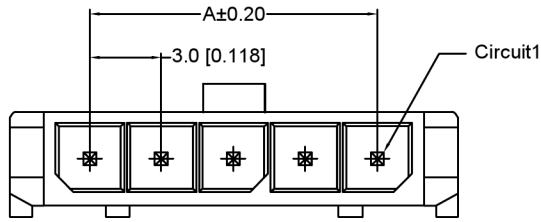


由 Autodesk 教育版产品制作

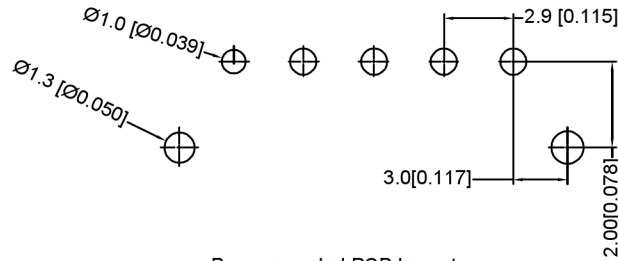


X3025 W V X-XX X- XX SN XX
① ② ③ ④ ⑤ ⑥ ⑦ ⑧ ⑨

- ⊙ Series No.
- ⊙ Category : W-wafer
- ⊙ Welding Board Angle: V- Straight 180°
- ⊙ Welding Way: Blank-DIP
- ⊙ Row No.-Pin No.: XX-02P~12P
- ⊙ Plug the Pin & Special No.:
- ⊙ Material: 46-PA46 94V- N0-PA9T 94V-0; XKB 66-PA66 94V-0
- ⊙ Planting Category: SN-Bright tin plating
- ⊙ Color: Blank -Natural Color

■ Specifications :

- Voltage rating: 250V AC / DC
- Current rating: 5A AC / DC
- Withstanding voltage: 1500V AC/minute
- Temperature range: -25°C~+85°C
- Insulation resistance: ≥1000M Ω
- Contact resistance: ≤10mΩ XKB
- After environmental testing : ≤20mΩ



Recommended PCB Layout
Total tolerance:±0.05mm

Poles	Dimensions(mm)		
	A	B	C
02	3.00	9.65	9.00
03	6.00	12.65	12.00
04	9.00	15.65	15.00
05	12.00	18.65	18.00
06	15.00	21.65	21.00
07	18.00	24.65	24.00
08	21.00	27.65	27.00
09	24.00	30.65	30.00
10	27.00	33.65	33.00
11	30.00	36.65	36.00
12	33.00	39.65	39.00

X3025WV-XX-66SN	PA66 UL 94V-0	Brass	Tin-Plated	X3025H
X3025WV- XX-46SNP	A46 UL 94V-0			
X3025WV-XX-N0SNP	A9T UL 94V-0			
PART NO	Material	Material(Pin)	Finish(Pin)	Mate s With XKB Housing

广东星坤科技股份有限公司

日期

文件工程章

REVISIONS	DATE	REVISED	APPROVED	UNSPECIFIED TOLERANCES	DSND	DATE	SCALE: N/A	MODEL TYPE:
XKB				ANGLAR ±5°	DWN		VIEW:	X3025WV-X X-XXSN
				L ≤ 4 ±0.2	CHKD		UNIT: mm/in	PART NO.:
				4 < L ≤ 16 ±0.3	APPD		SIZE: A4	3.00mm Crimp Style Connecto
				16 < L ≤ 63 ±0.4				DWG NO.:
				L > 63 ±0.5				

www.helloxkb.com XKB INDUSTRIAL PRECISION CO., LIMITED

WEIGHT	SHEET	REVISI
1.0g	1/1	A0