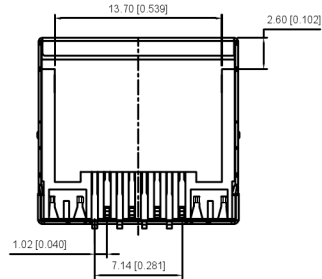
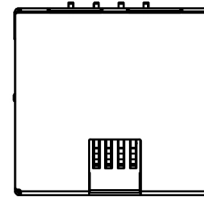


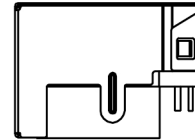
LEFT SIDE VIEW



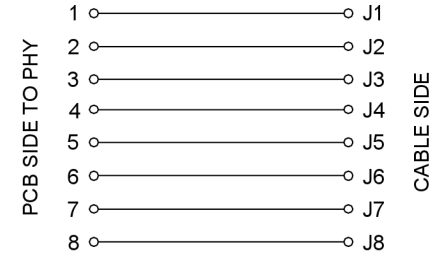
BOTTOM VIEW



TOP VIEW

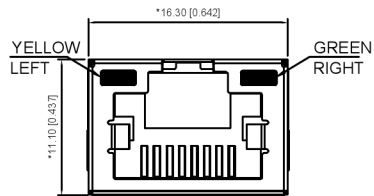
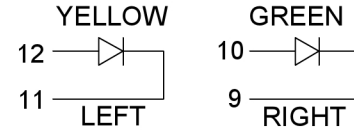


RIGHT SIDE VIEW

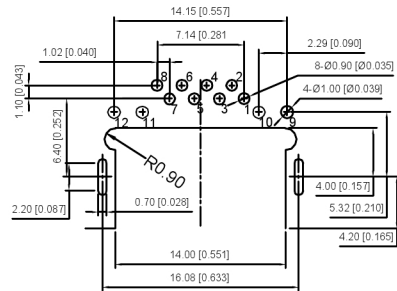


LED Specification

Standard LED Color	LED Wavelength	Foward(A)	Foward(V)
Green	568nm	20mA	1.85-2.45V
Yellow	585nm	20mA	1.7-2.2V



FRONT VIEW



RECOMMENDED PCB LAYOUT VIEWED FROM COMPONENT SIDE

XKB Connectivity

MATERIAL 材料:

HOUSING 外壳: LCP,UL94V-0,BLACK.
 TERMINAL 端子: PHOSPHOR BRONZE ,T=0.35MM,
 GOLD PLATING ON CONTACT AREA.
 SHIELD:C2680,T=0.20MM,20U" MIN NICKEL PLATING
 ON ALL AREA.

MECHANICAL 机械:

DURABILITY 耐用性: 750 CYCLES MIN.12.5MM/MINUTE
 INSERTION FORCE 插入力: 2.2KG.F MAX
 RETENTION STRENGTH 固位力: 7.7KG.F BETWEEN JACK AND PLUG
 OPERATING TEMPERATURE 工作温度: -40°C~+85°C.
 STORAGE TEMPERATURE 储存温度: -40°C~+85°C.
 ALL CRITICAL DIMENSIONS WITH ""

ELECTRICAL 电动:

VOLTAGE 电压:125 VOLTS AC
 CURRENT RATING 额定电流:1.5AMP
 DIELECTRIC STRENGTH 介电强度:1000 VAC RMS 50HZ OR 60HZ,1MIN
 INSULATION RESISTANCE 绝缘电阻:500 MEGA OHMS MIN.INITIAL
 AFTER 500V DC FOR 1 MINUTE
 CONTACT RESISTANCE 接触电阻:SINGLE TERMINAL 30 MILLIOHMS MAX
 INITIAL 50 MILLIOHMS MAX.AFTER
 DURABILITY TEST

广东星坤科技股份有限公司

ΔX		日期
ΔX		日期
ΔX		日期
MARK		DESCRIPTION

REVISIONS	DATE	REVISED	APPROVED	UNSPECIFIED TOLERANCES



DSND	SCALE: N/A	MODEL TYPE: RJ JACK
DWN	VIEW:	PART NO.:
CHKD	UNIT: mm/in	DWG NO.:
APPD	SIZE: A4	X39ADAB1W6DB1075
		WEIGHT
		SHEET
		REVISION

文件工程章