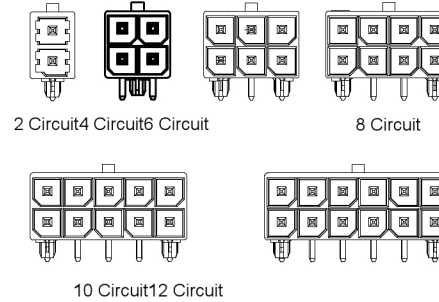
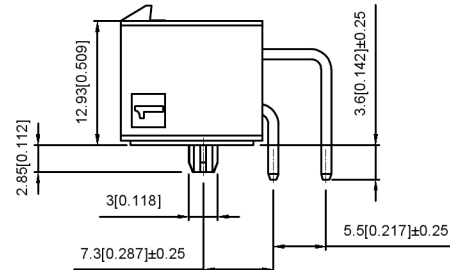
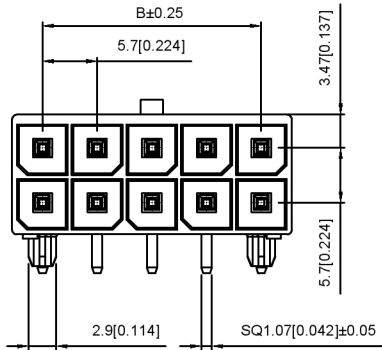


Poles	Dimensions (mm)	
	A	B
2x01	8.35	
2x02	12.05	5.70
2x03	17.75	11.40
2x04	23.45	17.10
2x05	29.15	22.80
2x06	34.85	28.50

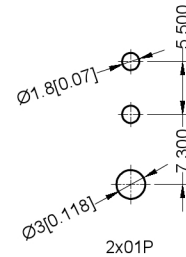
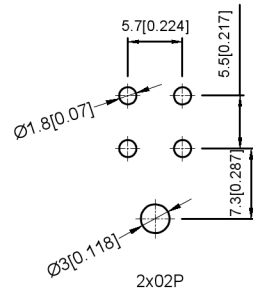
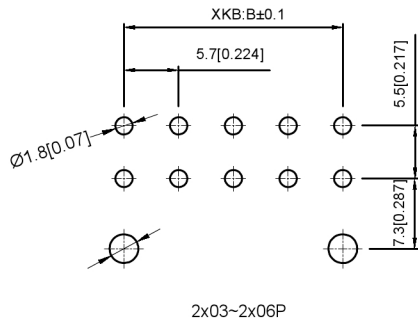
Specifications:

Voltage rating: 600V AC / DC
 Current rating: 16A AC / DC
 Withstanding voltage: 2200V AC/minute
 Temperature range: -40°C~+105°C
 Insulation resistance: ≥1000M Ω
 Contact resistance: ≤2mΩ
 After environmental testing : ≤10m Ω
 Special No.: H-High conductive Brass



X5700 W R -2xXX -LP SW

- ① Series No.
- ② Category ; W-WAFER
- ③ Welding Board Angle ; R-Straight 90°
- ④ Row No.-Pin No.: 2xXX-2x02P~2x06P
- ⑤ Material: LP -LCP 94V-0
- ⑥ Plating Category: SW-Matte Tin Plating



Recommended P.C.B Layout
 General Tolerance±0.05

X5700WR-2xXX-LPSW	High conductive Brass	X5700H	X5700T
PART NO	Material	Suitable XKB Terminal	Suitable XKB Terminal

DSND		DATE		SCALE: N/A	MODEL TYPE: Wire to board connector		
DWN		DATE		VIEW:	PART NO.:		
CHKD		DATE		UNIT: mm/in	DWG NO.:		
APPD		DATE		SIZE: A4	X5700WR-2xXX-LPSW		
XKB INDUSTRIAL PRECISION CO.,LIMITED					WEIGHT	SHEET	REVISION
					1.0g	1/1	A0

广东星坤科技股份有限公司

文件工程章

MARK	DESCRIPTION	DATE	REVISED	APPROVED	UNSPECIFIED TOLERANCES
ΔX					units: mm
ΔX					tolerance: X.X ±0.2mm
ΔX					X.XX ±0.1mm
ΔX					X.XXX ±0.05mm
REVISIONS					UNSPECIFIED TOLERANCES