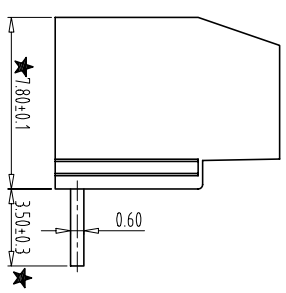
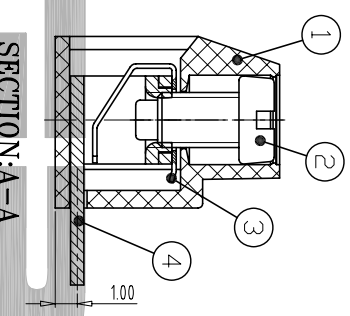
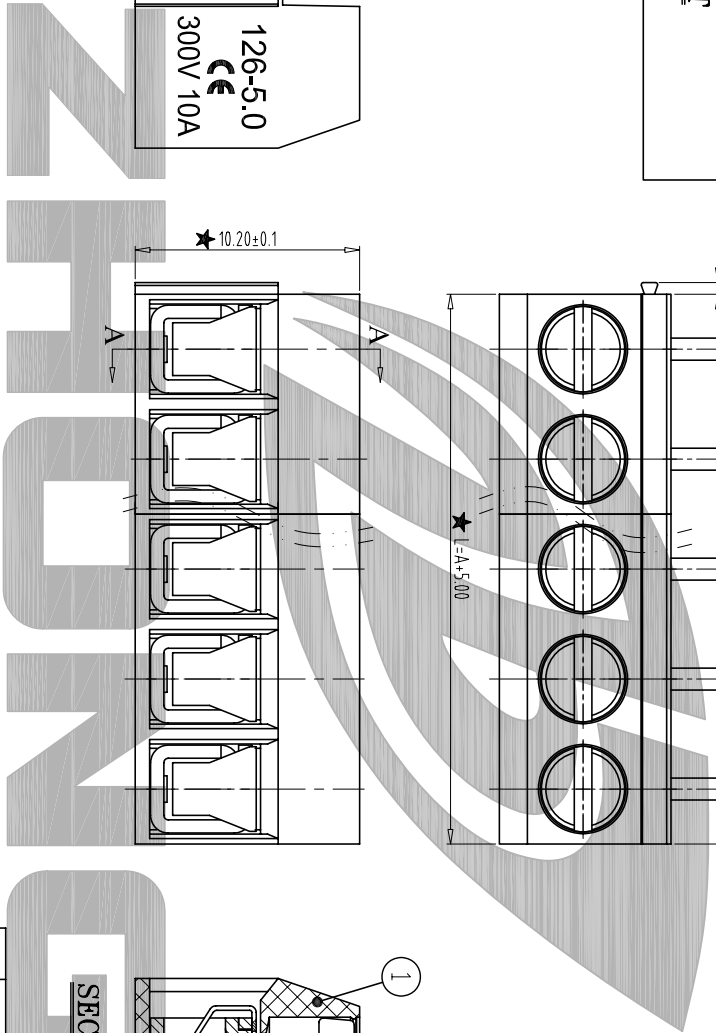
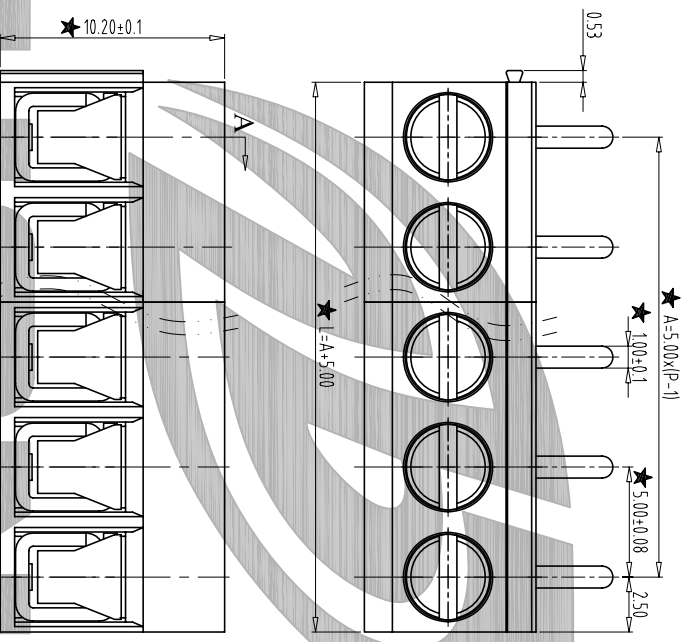
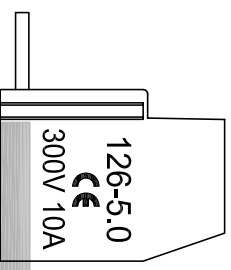
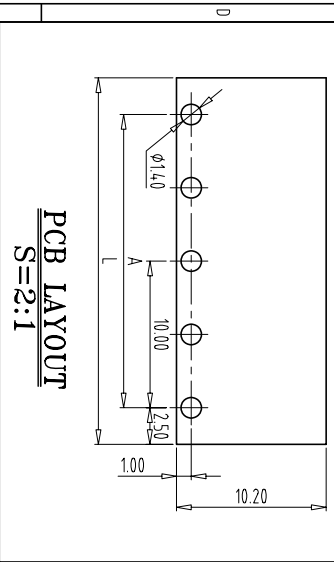


|             |         |   |   |   |   |     |          |
|-------------|---------|---|---|---|---|-----|----------|
| FILE: ZB02/ | 6       | 5 | 4 | 3 | 2 | 1   | 0        |
| REV         | CONTENT |   |   |   |   | CHK | DATE     |
| V1.0        | 品名汉字修正  |   |   |   |   | CXL | 14.08.26 |



- NOTES:
1. Rating: 300V 10A;
  2. Insulation Withstands Voltage: AC2000V/MIN
  3. Insulation Resistance: 500MΩ or more at DC500V
  4. Using Temperature Range: -40°C/+105°C
  5. Screw Torque Value: 0.4N.m
  6. Suitable Electric Wire: 14-22AWG
  7. "★" is the important dimension;
  8. RoHS Compliance.

| Total Pitch Tolerances |      | Nominal dimension range |      |
|------------------------|------|-------------------------|------|
| In mm                  |      | In mm                   |      |
| 0                      | 30   | 0                       | 30   |
| 30                     | 53   | 30                      | 53   |
| 53                     | 70   | 53                      | 70   |
| 70                     | 90   | 70                      | 90   |
| 90                     | 115  | 90                      | 115  |
| 115                    | 150  | 115                     | 150  |
| 150                    | 250  | 150                     | 250  |
| 250                    | 350  | 250                     | 350  |
| 350                    | 500  | 350                     | 500  |
| 500                    | 0    | 500                     | 0    |
| 0                      | 30   | 0                       | 30   |
| 30                     | 53   | 30                      | 53   |
| 53                     | 70   | 53                      | 70   |
| 70                     | 90   | 70                      | 90   |
| 90                     | 115  | 90                      | 115  |
| 115                    | 150  | 115                     | 150  |
| 150                    | 200  | 150                     | 200  |
| 200                    | 250  | 200                     | 250  |
| 250                    | 320  | 250                     | 320  |
| 320                    | 10   | 320                     | 10   |
| 10                     | all  | 10                      | all  |
| all                    | 0    | all                     | 0    |
| 0                      | 100  | 0                       | 100  |
| 100                    | to   | 100                     | to   |
| to                     | 150  | to                      | 150  |
| 150                    | over | 150                     | over |

|   |              |             |          |                 |                    |
|---|--------------|-------------|----------|-----------------|--------------------|
| 4   | SOLDER PIN   | ZB126B0004  | P        | BRASS           | Tin Plated         |
| 3   | SPRING COIL  | ZB126C0001  | P        | STAINLESS STEEL |                    |
| 2   | SCREW        | ZBST0009    | P        | STEEL           | M2.5/Zn Plated     |
| 1   | HOUSING      | ZB126A1XX02 | /        | PA66(V0)        | 02/03P             |
|   |              | ZB126A1XX03 |          |                 |                    |
| ITEM  | NAME OF PART | NO. OF PART | Q'TY     | MATERIAL        | NOTE               |
| DWG   | SK           | DATE        | 14.05.09 | SIZE            | A4                 |
| CHK   | DATE         |             |          | SCALE           | 3 : 1              |
| App.  | DATE         |             |          | NAME            | ZB126R-XP-XS(126R) |
| NINGBO ZHONGBA PHOTOVOLTAIC TECHNOLOGY CO., LTD |              |             |          | DWGNO.          | ZB-02-ZB126RXXPXS  |