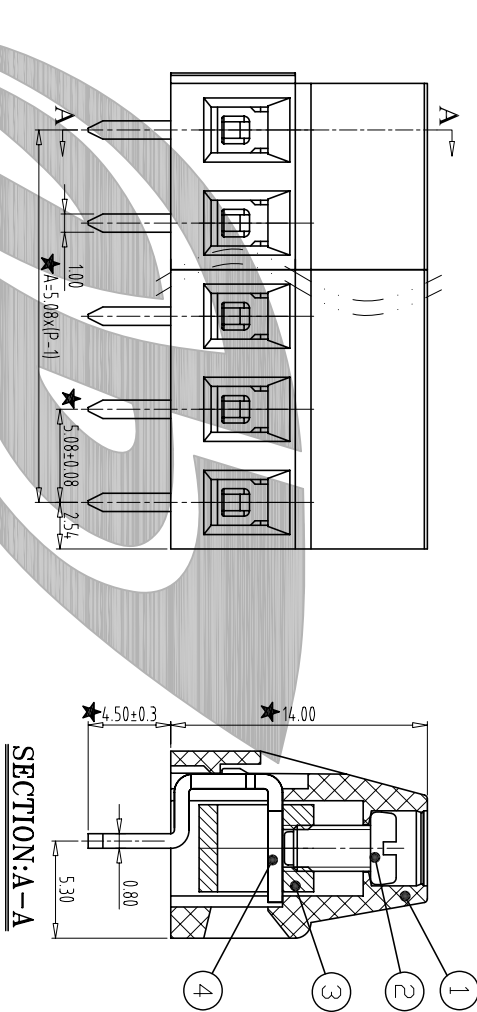
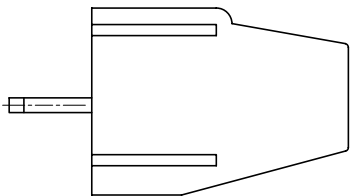
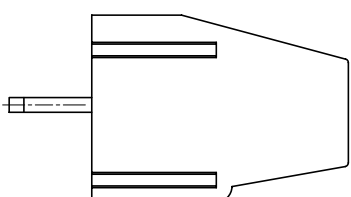


REV	CONTENT	CHK	DATE
V0.0	品名及料号变更	SK	14.05.13

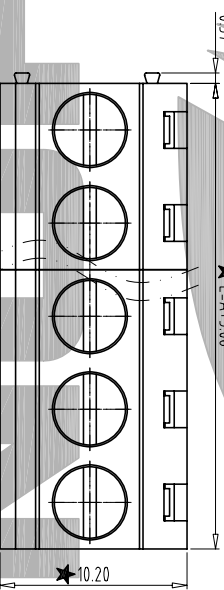


SECTION:A-A

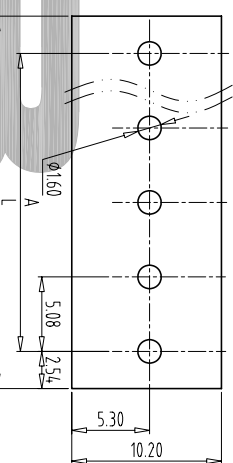


NOTES:

1. Rating:300V 10A;
2. Insulation Withstands Voltage: AC2000V/MIN
3. Insulation Resistance: 500MΩ or more at DC500V
4. Using Temperature Range: -40°C/+105°C
5. Screw Torque Value:0.4Nm
6. Suitable Electric Wire: 12-22AWG
- 7, " " ★ " the important dimension.



PCB LAYOUT
S=2:1



Total Pitch Tolerances		Nominal dimension range																							
in mm		in mm																							
over	0	30	53	70	90	115	150	200	250	300	320	350	400	450	500	550	600	650	700	750	800	850	900	950	1000
to	to	to	to	to	to	to	to	to	to	to	to	to	to	to	to	to	to	to	to	to	to	to	to	to	to
±0.18	±0.20	±0.25	±0.3	±0.35	±0.44	±0.55	±0.70	±0.75	±0.20	±0.25	±0.30	±0.35	±0.44	±0.55	±0.70	±0.80	±0.90	0.2	0.3	0.3	0.2	0.3	0.5	0.5	

ITEM	NAME OF PART	NO. OF PART	Q'TY	MATERIAL	NOTE
4	SOLDER PIN	ZB128B0001	P	BRASS	Tin Plated
3	BLOCK	ZBXC0001	P	BRASS	Ni Plated
2	SCREW	ZBST0021	P	STEEL	M2.5/Zn Plated
1	HOUSING	ZB228A0XX02 ZB228A0XX03	/	PA66(V0)	02/03P



ZHONGB

NINGBO ZHONGBO PHOTOVOLTAIC TECHNOLOGY CO., LTD

DWGNO.

ZB-02-ZB228VXXPXS