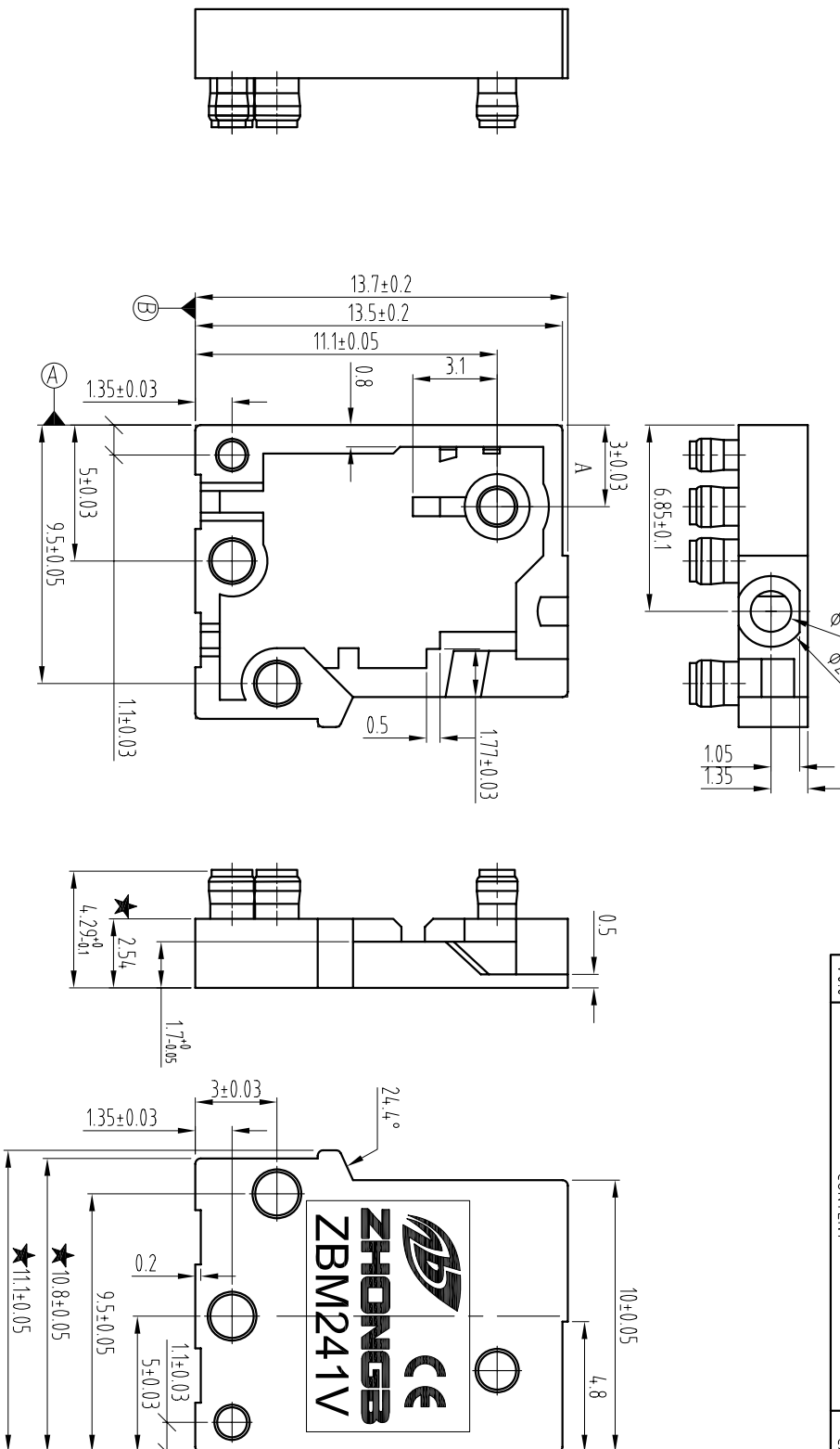
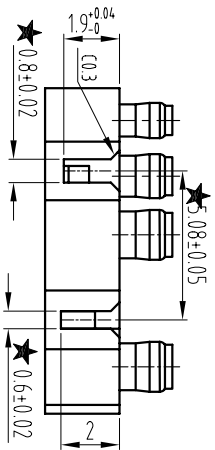


REV	CONTENT	CHK	DATE
V0.0	CONTENT	CXL	14.09.25



- 技术要求:
1. 表面无毛刺、变形等缺陷;
 2. 材料: PA66 (V0);
 3. 未注圆角为R0.2
 4. 管控尺寸 ★ 10P 累计公差0.1以内
 4. "★"处指品质管控点。



Total Pitch Dimension range in mm		Nominal dimension range in mm		radii		chamfers		short angle sid		//	
0 to 6	over to 16	0 to 6	over to 10	0 to 3	over to 0	3 to 6	over to 10	10 to 50	over to 120	0 to 120	over to 200
6 to 16	over to 30	6 to 10	over to 16	3 to 6	over to 0	6 to 30	over to 50	50 to 120	over to 400	120 to 200	over to 200
±0.07	±0.12	±0.09	±0.12	±0.1	±0.2	±0.2	±0.5	30° 20'	10' 0.1	0.2	0.3 0.4

/ HOUSING		ZM241A0XXXX		/ PA66		SEE NOTE	
ITEM	NAME OF PART	NO. OF PART	DATE	Q'TY	MATERIAL	NOTE	
DWG	CXL	14.09.25	DATE	SIZE	A4	UNITS	SHEET/OF 1/2
CHK	DATE	DATE	SCALE	4:1			
APP.	DATE	DATE	NAME	HOUSING			
NINGBO ZHONGSB PHOTOVOLTAIC TECHNOLOGY CO., LTD			DWGNO.	ZB-01-ZM241A0XXXX			
NINGBO ZHONGSB PHOTOVOLTAIC TECHNOLOGY CO., LTD			ZBM241V				