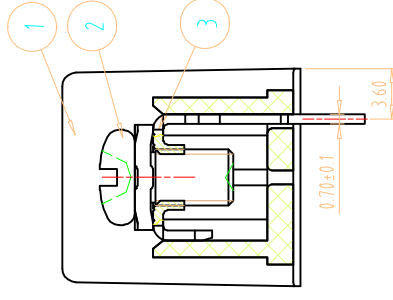
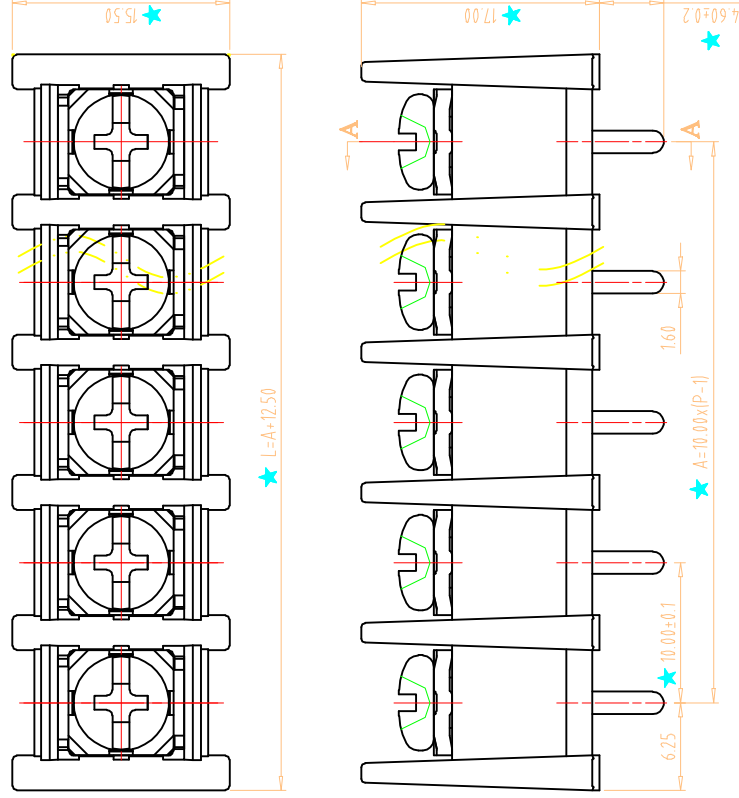


PCB LAYOUT
S=1.4:1



NOTES:

1. Rating:300V 30A;
2. Insulation Withstands Voltage: AC2000V/MIN
3. Insulation Resistance:
500MΩ or more at DC500V
4. Using Temperature Range: -40°C/+105°C
5. Screw Torque Value:12N.m
6. Suitable Electric Wire: 12-22AWG
7. "★" the important dimension.



DIM	P	Nominal dimension range																			
		2		3		4		5		6		7		8		9		10		11	
over	to	over	to	over	to	over	to	over	to	over	to	over	to	over	to	over	to	over	to	over	to
0	30	53	70	90	115	150	250	350	0	30	53	70	90	115	150	200	250	0	100	over	over
30	53	70	90	115	150	250	350	500	30	53	70	90	115	150	200	250	320	10	100	150	150
±0.18	±0.20	±0.25	±0.3	±0.35	±0.44	±0.60	±0.70	±0.85	±0.20	±0.25	±0.30	±0.35	±0.44	±0.55	±0.70	±0.80	±0.90	0.2	0.3	0.2	0.3
																					0.5

ITEM	NAME OF PART	NO. OF PART	Q'TY	MATERIAL	NOTE	SIZE		SCALE
						A4	mm	
3	SOLDER PIN	ZA50ZB0003	P	BRASS	Tin Plated			
2	SCREW	ZBST0004	P	STEEL	M4/Ni Plated			
1	HOUSING	ZA601A0XXXX	1	PA66	/			
DWG.	SK	DATE	2014-12-19					
CHK		DATE						100
APP.		DATE						ZBA601S-XP-XC



NINGBO ZHONGBO PHOTOVOLTAIC TECHNOLOGY CO., LTD. DWGNO. ZB-02-ZBA601S-XP-XC