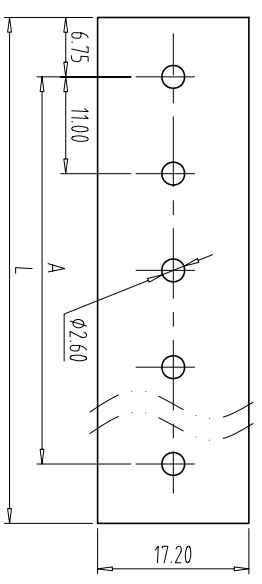
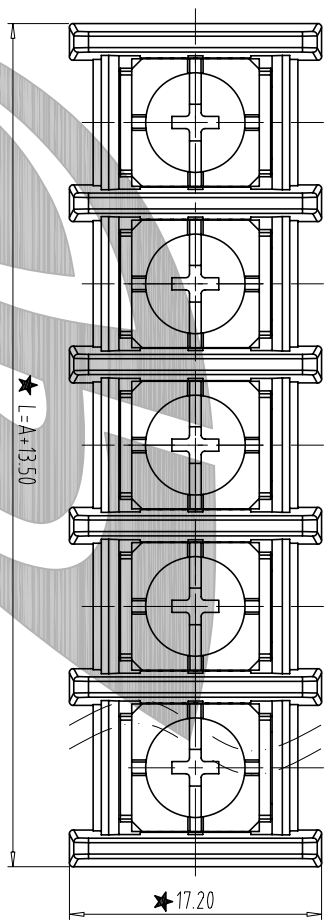


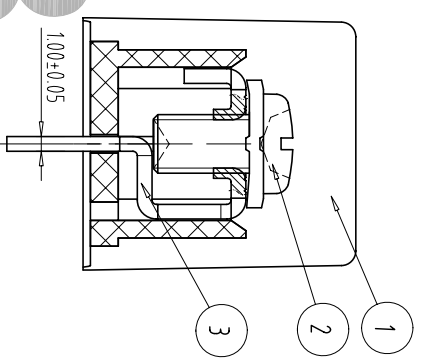
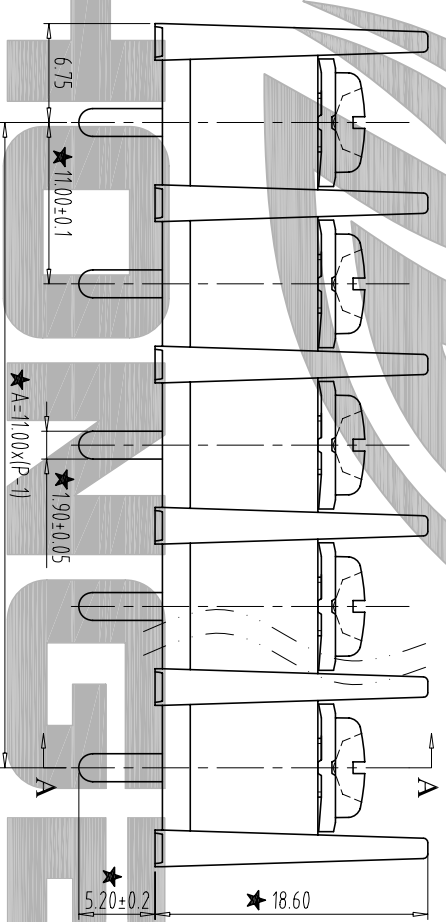
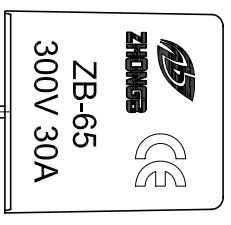
FILE: ZB02/	6	5	4	3	2	1	
REV	CONTENT					CHK	DATE
V0.0	CONTENT					SK	2014-08-12



**PCB LAYOUT**  
S=1.2:1



- NOTES:
1. Rating: 300V 30A,
  2. Insulation Withstands Voltage: AC2000V/MIN
  3. Insulation Resistance: 500M $\Omega$  or more at DC500V
  4. Using Temperature Range: -40 $^{\circ}$ C/+105 $^{\circ}$ C
  5. Screw Torque Value: 12Nm
  6. Suitable Electric Wire: 12-22AWG



**SECTION: A-A**

Total Pitch Tolerances		Nominal dimension range	
in mm		in mm	
0	to	0	to
30	to	30	to
53	to	53	to
70	to	70	to
90	to	90	to
115	to	115	to
150	to	150	to
250	to	250	to
350	to	350	to
500	to	500	to
0	to	0	to
30	to	30	to
53	to	53	to
70	to	70	to
90	to	90	to
115	to	115	to
150	to	150	to
200	to	200	to
250	to	250	to
320	to	320	to
0	to	0	to
10	to	10	to
all	to	all	to
0	to	0	to
100	to	100	to
150	to	150	to

ITEM	NAME OF PART	NO. OF PART	Q'TY	MATERIAL	NOTE
3	SOLDER PIN	ZA701B0001	P	Brass	Tin Plated
2	SCREW	ZBS T0031	P	STEEL	M4/NI Plated
1	HOUSING	ZA701A0XXXX	1	PA66	/

DWG	SK	DATE	2014-08-12	SIZE	A4	UNITS	mm	SHEET/OF	1/1
CHK		DATE		SCALE	2:1	ZB65			
App.		DATE		NAME: ZBA701-XXP-XC					